

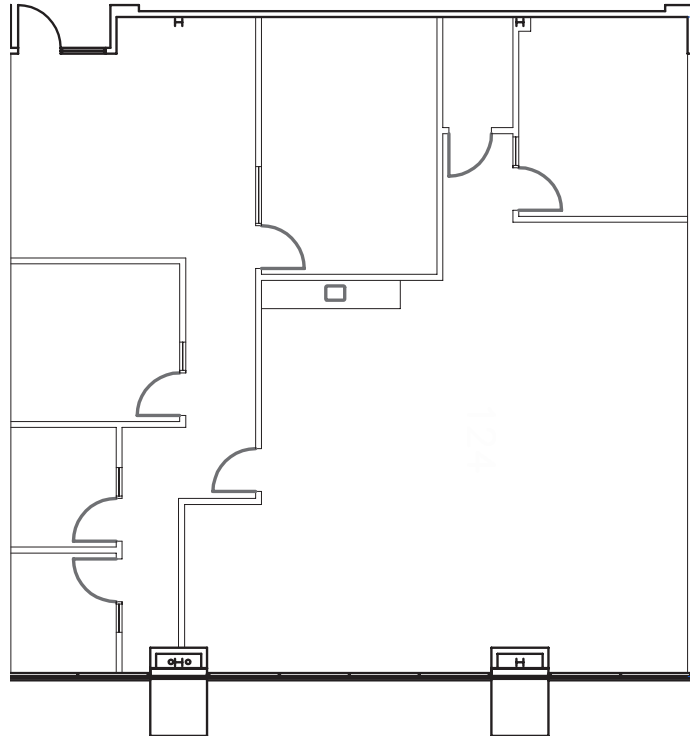


## Availabilities

1910 S Stapley Dr

<b>As Built</b>	<b>RSF</b>
-----------------	------------

Suite 124	2,687
-----------	-------



### For leasing information contact

**Rachael Thompson**

602.513.5122

rachael.thompson@kidder.com

**Perry Gabuzzi, CCIM**

602.513.5116

perry.gabuzzi@kidder.com

[stapleymedicalcenter.com](http://stapleymedicalcenter.com)



Harbert  
Management  
Corporation

**CYPRESS**  
OFFICE PROPERTIES

**km** **Kidder  
Mathews**

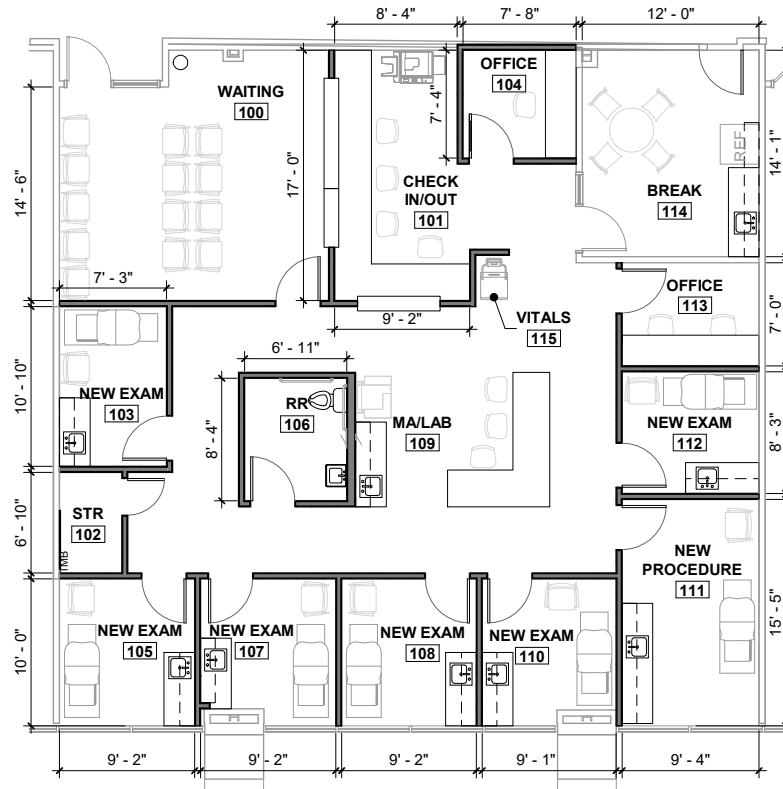
This information supplied herein is from sources we deem reliable. It is provided without any representation, warranty or guarantee, expressed or implied as to its accuracy. Prospective Buyer or Tenant should conduct an independent investigation and verification of all matters deemed to be material, including, but not limited to, statements of income and expenses. Consult your attorney, accountant, or other professional advisor.

**Spec Suite**

**RSF**

Suite 124

2,687



For leasing information contact

**Rachael Thompson**

602.513.5122

rachael.thompson@kidder.com

**Perry Gabuzzi, CCIM**

602.513.5116

perry.gabuzzi@kidder.com

[stapleymedicalcenter.com](http://stapleymedicalcenter.com)

